



Police  .....

Other Bodies/Individuals  .....

**FINAL DECISION NO**

**SUGGESTED NEXT STEPS:**

Details to be specified

Further consideration by this Committee  .....

To Council  .....

To Cabinet  A final draft of the strategy will be presented to Cabinet

To an O & S Committee  .....

To an Area Committee  .....

Further Consultation  .....

**Agenda No  
Community Protection Overview and Scrutiny Committee  
3 September 2008.**

**Community Safety Strategy**

**Report of the Strategic Director for Community Protection  
and County Fire Officer**

**Recommendation**

That Members comment upon the attached draft community safety strategy before it is submitted to Cabinet for approval.

**Introduction**

Warwickshire County Council (WCC) has made 'protecting the community and making Warwickshire a safer place to live' one of its four corporate priorities.

Most of our work relating to community safety is delivered in partnership settings and significant aspects of our strategy are also developed in the partnership context. WCC has signed up to a shared 'mission' for community safety and to a set of priorities which are included in both the Local Area Agreement (LAA) and Community Safety Agreement, both of which have been presented to the committee within the last four months. The council has also recently agreed its vision for community safety.

This community safety strategy for Warwickshire County Council will align with both the Local Area Agreement and Community Safety Agreement, but will focus on setting out what contribution the Council will make to the delivery of the shared community safety priorities. It will be the means through which the fourth corporate priority is delivered.

WILLIAM BROWN  
Strategic Director for  
Community Protection and  
County Fire Officer

Shire Hall  
Warwick

19 August 2008

H:\MemberServices\Committee Papers-Loading\Community Protection O&S\Community Protection 08-09-03\CS Strategy 08.08.doc



# PROTECTING THE COMMUNITY AND MAKING WARWICKSHIRE A SAFER PLACE TO LIVE – A COMMUNITY SAFETY STRATEGY

Formatted: Font: 9 pt

## 1 WHAT IS COMMUNITY SAFETY?

Community Safety focuses on the causes and consequences of crime and disorder. The goal is to improve the quality of life for our citizens, preventing harm and reducing risk through proactive, targeted interventions. This is achieved by working with partners and the community to:

- reduce crime, anti-social behaviour and substance misuse
- create safer environments
- promote community cohesion
- raise community confidence and build resilience
- raise the aspirations of young people and vulnerable individuals
- reduce death and injury on the roads.

Deleted: .

Formatted: Space After: 0 pt

Formatted: Font: 8 pt

## 2 WHY DO WE NEED A COMMUNITY SAFETY STRATEGY?

All aspects of community safety including crime, disorder, anti-social behaviour, drug and alcohol misuse and road safety are high priorities nationally and locally, as surveys continue to show.

The Council has statutory duties to promote road safety and to take account of community safety in all its activities. Since the introduction of this duty, there has been more emphasis on the importance of individuals feeling safe in their environment so that they can take a full part in the life of the community.

Warwickshire County Council has therefore made 'protecting the community and making Warwickshire a safer place to live' one of its four corporate priorities.

Recent legislation has required authorities in two-tier areas to work together to produce a Local Area Agreement (LAA), within which the theme of 'Safer and Stronger Communities' must be included. Within Warwickshire, we place a particular emphasis on the safer strand. It is a separate LAA theme with an established partnership governance structure overseeing its development.

There is also a new requirement to produce a Community Safety Agreement which identifies countywide (and shared) priorities and sets out a joint approach for tackling these priorities. Warwickshire's Community Safety Agreement has been developed following strategic assessments conducted at both county and district level. The agreement also aligns with the Crime and Disorder Reduction Partnership (CDRP) level partnership plans which set out what CDRPs will deliver in the next three years, the resources available and how performance will be measured.

This community safety strategy for Warwickshire County Council will align with both the Local Area Agreement and Community Safety Agreement, but will focus on setting out what contribution the Council will make to the delivery of the shared community safety priorities. It will be the means through which the fourth corporate priority is delivered.

(The targets for the fourth priority are included as Appendix 2, [alongside the current Local Public Service Agreement \(LPSA2\) targets.](#))

### 3 NATIONAL DRIVERS FOR COMMUNITY SAFETY

Deleted: ¶  
¶

Priorities within the Community Safety Strategy are influenced by a range of factors at both a national and local level, including: national and local policy, current performance and Warwickshire's demographics.

During 2007 several key strategic documents were produced by Government.

The new crime strategy, *Cutting Crime: A New Partnership 2008-11* identified the following key areas:

- Strong focus on serious violence
- Continued pressure on anti-social behaviour
- Renewed focus on young people
- New national approach for designing out crime
- Continue to reduce re-offending (focusing on prolific/priority offenders)
- Greater sense of national partnership
- Freeing up partners, building public confidence.

*The National Community Safety Plan 2008-11* is aligned with the priorities in the new crime strategy and the new set of Public Service Agreements (PSAs) for 2008-11.

There is a single PSA for community safety: *PSA 23, Make Communities Safer.*

Under this PSA sit four priority actions:

- Reduce the most serious violence
- Reduce serious acquisitive crime
- Tackle local priorities; increasing public confidence
- Reduce reoffending.

A number of other PSAs also contribute to the delivery of community safety. These are:

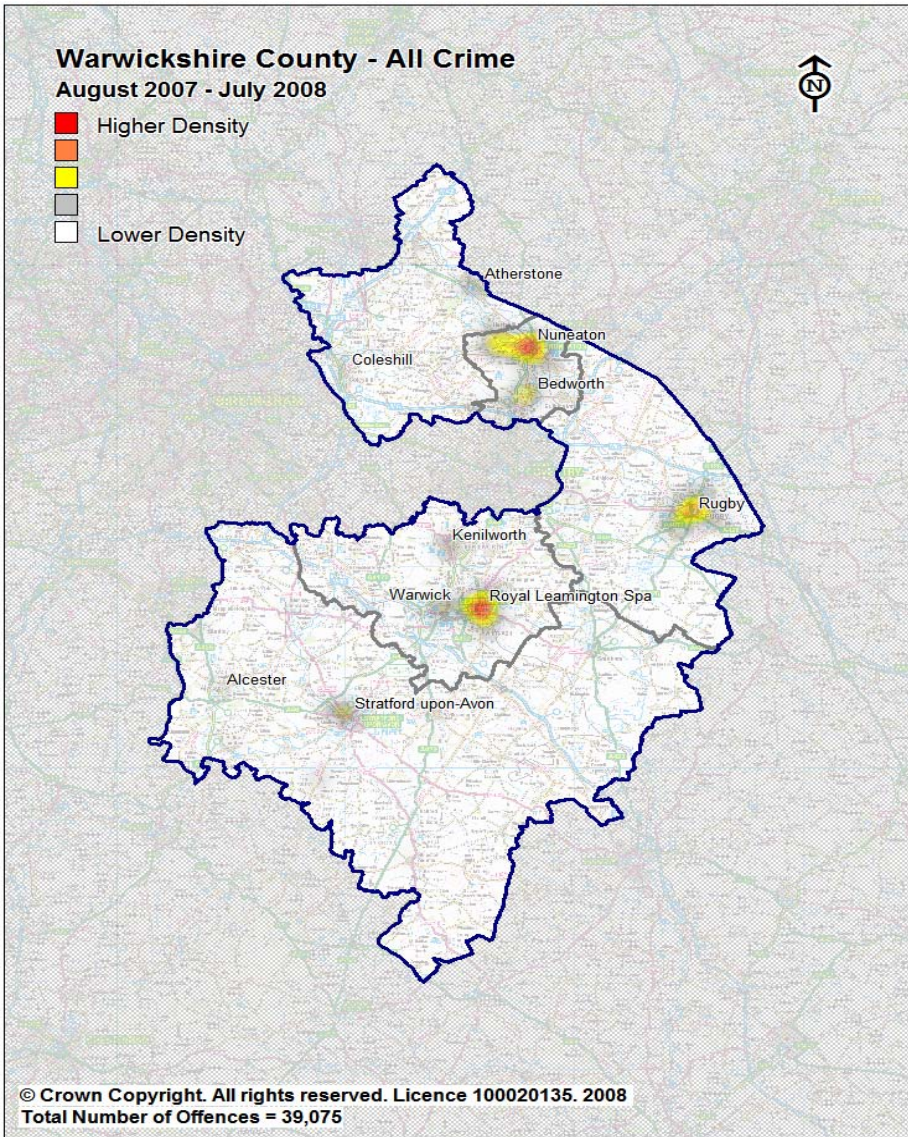
- Reduce the harm caused by alcohol and drugs
- Reduce the risk from international terrorism
- Build more cohesive, empowered and active communities
- Tackle poverty and promote independence and wellbeing in later life
- Increase the number of young people on the path to success
- Improve children and young people's safety
- Deliver a more effective Criminal Justice System
- Increase the proportion of socially excluded adults in settled accommodation and employment, education or training.

Several of these priorities demonstrate the need for strong cross cutting work between several Warwickshire County Council directorates.

#### **4 LOCAL DRIVERS FOR COMMUNITY SAFETY**

Our current performance shows a strong improvement in reducing acquisitive crime and reducing road casualties, but a remaining concern for the level of serious violent crime, domestic abuse and anti-social behaviour.

Although overall Warwickshire is seen as a relatively safe place in relation to the rest of England, it does have several neighbourhoods with high levels of deprivation and crime. A brief summary of where our community safety needs are highest is captured in the Crime Density Map below.



#### 4.1 Narrowing the Gap

One of the underlying principles of Warwickshire County Council's Corporate Business Plan and the Warwickshire LAA is a commitment to narrowing the gap between the most disadvantaged communities and the rest of the county.

Nuneaton and Bedworth has the highest level of deprivation in the county - ranked as the 112<sup>th</sup> most deprived local authority area out of 354 in England. Currently, 9 out of the 13 highest super output areas in the crime domain are in Nuneaton and Bedworth, with 3 in Rugby and 1 in Warwick.

Deleted: ¶  
 ¶  
 ¶  
 ¶  
 Formatted: Space After: 0 pt



In 2007, the Public Service Board (PSB) commissioned work to quantify the 'gap' that exists amongst Warwickshire's communities. The work confirmed that there is a North (worst) and South (best) split in Warwickshire and that we have not yet achieved progress in narrowing the gap, indeed in some cases the gap is growing.

The three community safety related indicators selected for a 'narrowing the gap' focus within the new LAA are:

- Serious violent crime
- Serious acquisitive crime
- Dealing with local concerns about crime and antisocial behaviour by local agencies and the police.

The strategic assessment to be completed in November 2008 will give us data to enable us to measure our success in narrowing the gap in relation to these indicators.

## 5 OUR VISION FOR 2015

Community safety is important in supporting the achievement of many of Warwickshire County Council's priorities as well as being fundamental to the joint 'mission' we have with our community safety partners of 'protecting our communities from harm.'

Our vision in relation to community safety is that Warwickshire will be a safer place by 2015, with young and old able to walk the streets and go about their business with confidence. Crime and the fear of crime will have been much reduced thanks to more effective collaboration between Council, Police, Police Authority and others, working together to make us all feel safe and secure.

By 2015, these are the changes we would expect to see:

- Violent crime, theft and arson figures all coming down thanks to better intervention and support by teams of multi-skilled professionals
- A significant reduction in levels of youth crime and acts of anti social behaviour
- Fear of crime reduced, making residents feel safer, opening up better tourist, leisure and business opportunities for Warwickshire's communities
- Misuse of drugs and alcohol reduced thanks to better treatment, prevention and enforcement programmes
- Fewer people killed and seriously injured on the roads thanks to a programme of targeted road safety and education campaigns.

Formatted: Indent: Left: 17.85 pt, Hanging: 17.85 pt, Space After: 0 pt

Formatted: Font: 8 pt

## 6 PRINCIPLES

The strategy is underpinned by the following principles:

- Our focus will be on prevention and on the causes or risk factors which impact upon crime, disorder and anti-social behaviour

H:\MemberServices\Committee Papers-Loading\Community Protection O&S\Community Protection 08-09-03\CS Strategy 08.08.doc

- We are committed to working in partnership, both internally and with external agencies and the voluntary and business sectors to deliver our community safety priorities
- Our activities will be intelligence led and informed by sound analysis and information will be shared appropriately with internal and external partners
- We will focus on areas where we can have most impact and contribute to 'narrowing the gap' between our most disadvantaged communities and the rest of the county..

Formatted: Font: 8 pt

## 7 JOINT COUNTYWIDE STRATEGIC PRIORITIES

Formatted: Space Before: 0 pt, After: 0 pt

In developing the Warwickshire Local Area Agreement Safer Block and the Community Safety Agreement, local and national drivers were analysed, alongside the results of a comprehensive strategic assessment carried out in the autumn of 2007. (Appendix 1 summarises the results of the Strategic Assessments.)

There followed a partnership consultation exercise which resulted in the emergence of the priorities set out below and the identification of 6 key performance measures from the basket of National Indicators. (Targets for these are given in Appendix 2 [along with the current LPSA2 targets.](#))

- reducing serious violent crime
- reducing anti-social behaviour, including criminal damage and arson
- reducing the harm caused by alcohol and drug misuse
- reducing serious acquisitive crime
- improving road safety
- reducing and preventing offending
- improving community engagement and cohesion
- reducing the risks posed by international terrorism

## 8 DELIVERING OUR PRIORITIES

Deleted: ¶

This strategy now focuses on the role of Warwickshire County Council in delivering our community safety aspirations.

### 8.1 Priority 1 – Reducing Serious Violent Crime

Deleted: ¶

Serious violence includes homicide, attempted murder, grievous bodily harm, deaths through dangerous driving, domestic abuse and serious sexual offences. For CDRPs, the focus will be at 'street' level, developing local action plans to tackle local priorities, with the countywide focus on the broader issues that can be improved through multi-agency, partnership working.

#### Key actions for WCC will be:

- Develop the domestic abuse strategy and action plan and commission services to ensure that the strategy and action plan are delivered. Five key objectives for this strategy are [to](#):
  - [ensure that the safety and support needs of those experiencing domestic abuse are met](#) Deleted: To
  - [ensure that perpetrators are both held accountable and provided with support](#) Deleted: To
  - [reduce incidents of domestic abuse](#) Deleted: To
  - [ensure children and young people who have witnessed domestic abuse are protected and supported](#) Deleted: r
  - [ensure that agencies work together to provide a co-ordinated response](#) Deleted: To
- Implement actions designed to reduce the harm caused by alcohol and drug misuse (see also Priority [3](#))
- Contribute to a multi-agency partnership groups dedicated to driving forward violence reduction at both county and CDRP level.

#### Contribution towards 'Narrowing the Gap':

- Actions to be targeted towards locations and communities with the highest levels of recorded violent crime.
- Countywide alcohol implementation plan to focus on ensuring services are equally accessible around the county.

### 8.2 Priority 2 – Reducing Anti-Social Behaviour

Tackling the anti-social behaviour and crime and disorder issues of greatest importance and increasing the public's confidence in the local agencies dealing with these issues are our overall aim here.

#### Key actions for WCC will be:

- Develop and implement the countywide anti-social behaviour strategy and action plan. Work focuses on the prevention and causes of ASB, balancing [ing](#), enforcement of standards with the provision of support for individuals, families Deleted: ¶  
Deleted: ¶  
Deleted: e

and communities and ensuring early intervention where problems occur.

Deleted: e

There is a focus on six priorities:

- o parenting
  - o education
  - o community factors and environmental improvements
  - o individual factors – alcohol and drugs
  - o preventative and diversionary interventions
  - o enforcement activity through the youth offending service
- Develop an effective and co-ordinated system for case-managing anti-social behaviour across the county
  - Develop county level initiatives designed to reduce incidents of arson through partnership working, problem-solving interventions, targeted work with potential and actual fire setters and appropriate education
  - Tackle sales to children of alcohol and other intoxicating substances, using the full range of campaigning methods and enforcement tools.

Formatted: Indent: Left: 18 pt

Deleted: co-ordinated,

Deleted: through

Deleted:

Deleted: and

#### Contribution towards 'Narrowing the Gap':

- Programmes developed to reduce anti-social behaviour to be targeted towards specific locations and communities with the highest levels of anti-social behaviour and fear of crime.

### 8.3 Priority 3 – Reducing the Harm of Alcohol and Drug Misuse

The strategic planning and co-ordination of work to reduce the harm caused by drug and alcohol misuse is undertaken on a countywide basis through the Drug and Alcohol Strategy Team; while links between alcohol and violence and drugs and acquisitive crime ensure that much of the 'operational' delivery will be implemented at a CDRP level. At a countywide level, the focus of interventions can be seen to be treatment, prevention, licensing and supply reduction, as well as the sharing of effective practice between agencies around the county.

#### Key actions for WCC will be:

##### Alcohol

- Implement the county level Alcohol Harm Reduction Strategy. Warwickshire County Council's priority actions are to:
  - o improve alcohol education for young people and raise awareness of alcohol issues, particularly amongst vulnerable groups
  - o improve the screening and referral of young offenders and parents who have problematic alcohol use into treatment and support
  - o develop services to meet the needs of children and young people who live with alcohol abusing parents/guardians
  - o increase awareness of alcohol-related domestic abuse and deliver appropriate interventions

- introduce a process for alcohol screening and brief interventions within Tier 1 services to ensure the early identification of individuals whose misuse of alcohol may cause harm
  - improve training in alcohol misuse in Warwickshire's workforce and ensure that employers have the appropriate alcohol policies in place
  - support licensed premises in responsible retailing and marketing.
- Commission treatment services
  - Support the delivery of local alcohol strategies.

### **Drugs**

- Develop a single Warwickshire strategic plan for drugs, the four main aims of which are expected to reflect the national strategy and are:
  - protecting communities through robust enforcement to tackle drug supply, drug-related crime and anti-social behaviour
  - preventing harm to children, young people and families affected by drug misuse
  - delivering an effective drug treatment and rehabilitation system
  - delivering public information campaigns, communications and community engagement.

### **Contribution towards 'Narrowing the Gap':**

- Interventions to be targeted towards locations and communities with highest levels of harm caused by alcohol and drugs
- Countywide plans to focus on ensuring services are equally accessible.

## **8.4 Priority 4 - Reducing Serious Acquisitive Crime**

We aim to continue progress on tackling serious acquisitive crime through a focus on the issues of greatest priority in each locality and on the most harmful offenders. This is mainly delivered through multi-agency working at a CDRP level. However, working on a countywide basis can provide added value through the consideration of joint commissioning and sharing of good practice, as well as providing analysis and the identification of hotspot areas.

### **Key Actions for WCC will be:**

- Deliver projects and actions to reduce vehicle crime and burglary with partners in the CDRPs
- Deliver projects and actions designed to reduce business crime in liaison with the Warwickshire Business Crime Unit
- Undertake joint work designed to tackle doorstep crime and distraction burglary
- Undertake joint commissioning to reduce acquisitive crime whenever practicable.

### **Contribution towards 'Narrowing the Gap':**

- Programmes developed to reduce acquisitive crime to be targeted towards specific locations and communities with the highest levels of acquisitive crime.

## **8.5 Priority 5 - Improving Road Safety**

'Road safety' and 'speeding' are high community priorities. Road safety concerns discourage people from walking and cycling and we need to ensure that the safety of pedestrians and cyclists is also high on our agenda. This priority is co-ordinated on a countywide basis through the Warwickshire Road Safety Partnership, in which Warwickshire County Council and Warwickshire Police are key partners. The Partnership's objective is to reduce the number of people killed or injured on Warwickshire's roads.

### **Key Actions for WCC will be:**

- Implement the road safety strategy to reduce the number of people killed or injured on Warwickshire's roads; in particular:
  - improve communications with local communities, particularly via parish councils
  - promote training for all road users
  - change young people's attitudes to driving and their own safety
  - promote awareness of the effects of drink, drugs and drowsiness on driving
  - work with the Powered Two Wheeler Forum to reduce the high level of motorcycle casualties
  - investigate community concerns of unsafe speed in a locality and respond with appropriate interventions
  - use safety cameras where evidence shows they are the most cost effective way of reducing casualties at a particular site or route
  - implement engineering schemes where cost effective measures can be developed to reduce casualties
  - carry out road safety audits on all new schemes and alterations to the existing road network
- Undertake safety checks on used vehicles for sale and quality of car servicing carried out around the county
- Develop a partnership 'Drive for Life' to address the issue of mature road user casualties.

### **Contribution towards 'Narrowing the Gap':**

- Research shows that the child casualty rate is higher in areas of deprivation. Educating children in these areas in safe road use will be a high priority
- Road safety and enforcement measures will be targeted towards the areas with highest casualty levels
- Community concerns of unsafe speeding will be investigated and action taken to combat it. Priority will be given to action in the areas with the worst unsafe

speeding problems to ensure no locality suffers disproportionately from the consequences of unsafe speed.

## **8.6 Priority 6 – Reducing and Preventing Offending**

Prevention and rehabilitation are key principles to the development of safer and healthier communities. A range of countywide agencies contribute towards this through actions designed to prevent offending and re-offending. Warwickshire County Council's focus is on young offenders.

### **Key actions for Warwickshire County Council will be:**

- Build appropriate services around the identified needs of young people and ensure interventions are put in place at the earliest possible stage
- Design positive activities for particular groups of vulnerable children and young people
- Ensure concerns are picked up where young people are putting themselves at risk, be it towards anti-social behaviour, experimenting with alcohol, drugs or substance misuse or unsafe sexual activity
- Contribute to a review of the Prolific and Priority Offender scheme.

### **Contribution towards 'Narrowing the Gap':**

- Programmes designed to reduce offending to be targeted towards locations and communities with high levels of youth and adult offending
- Positive activities for young people to be targeted, based on a matrix of indicators, towards areas where these will have the maximum impact.

## **8.7 Priority 7 – Community Engagement**

A countywide method for engaging with communities has been established through the multi-agency Partners and Communities Together (PACT) meeting process which enables residents to put forward their priorities for local policing and interventions. These PACT meetings are to be fully integrated with Community Forums in 2008 under the new locality working arrangements for Warwickshire. This will ensure citizens have one arena in which to engage on all issues affecting their communities.

### **Key Actions for WCC will be:**

- Establish 30 Community Forums as the key focal point for engagement with local people, to identify the key issues affecting communities and give them opportunity to voice their aspirations and concerns and influence the services delivered by key partners

- Work with partners to engage young people through Youth Forums and school based PACTs
- Contribute to the development and implementation of a partnership Community Cohesion Strategy.

**Contribution towards ‘Narrowing the Gap’:**

- Communities engaged and intelligence monitored and acted upon to ensure all residents feel their concerns are of equal importance to partner agencies and their neighbourhoods are safe places to live
- Areas of community tension to be monitored and identified and initiatives implemented to ensure no community is disproportionately affected by hate crime.

**8.8 Priority 8 – Counter Terrorism**

Counter terrorism is a national issue that agencies in Warwickshire need to take into account at a countywide and local level. This is a priority that will be led at a countywide level by Warwickshire Police.

**Key actions for Warwickshire County Council will be:**

- Fully engage Warwickshire County Council services in the development and implementation of a countywide counter terrorism ‘prevent’ strategy, which will:
  - undermine extremist ideology
  - disrupt those who promote violent extremism
  - support individuals who are vulnerable to recruitment by violent extremists
  - increase the resilience of communities
  - address grievances effectively.

**Contribution towards ‘Narrowing the Gap’**

- Activity and intelligence to be monitored to ensure no locality or community faces a disproportionate risk of becoming the victim of a terrorist attack.



## 9 Performance Management

Effective performance management forms a vital part of this Community Safety Strategy. Many of the actions in this strategy are also part of other Directorate and Partnership planning processes. The table below shows where further detail on many of the strategies can be found and indicates how performance will be monitored and managed.

<b>Area of Business</b>	<b>Related plans</b>	<b>Monitoring Arrangements</b>
Domestic abuse	Domestic abuse strategy and action plan	Quarterly reports to Crime and Disorder Management Group Six monthly reports to Overview & Scrutiny Committee
Violence reduction	Specific project plan under development	Strategy reported to countywide Violence Strategy Group
Anti-social behaviour	Anti-social behaviour strategy and action plan	Quarterly reports to Crime and Disorder Management Group Six monthly reports to Overview & Scrutiny Committee
Arson reduction	Arson reduction strategy and operational guidance	Fire and Community Safety Strategic Group
Alcohol	Alcohol Harm Reduction Strategy and Implementation Plan	Quarterly reports to Drug and Alcohol Management Group and six monthly reports to Overview & Scrutiny Committee
Drugs	Strategy to be developed during 2008/09	Performance monitored through the Drug and Alcohol Management Group
Doorstep crime and distraction burglary	Trading Standards Service Plan	Full year performance report annually to Overview and Scrutiny Committee
Road safety	Road Safety Strategy	Update reports to Overview and Scrutiny Committee
Safety checks on used vehicles and car servicing	Trading Standards Service Plan	Full year performance report annually to Overview and Scrutiny Committee
'Drive for Life'	Road Safety Delivery Plan	Environment and Economy Directorate Strategic Management Team
Young people initiatives	Targeted Youth Support Action Plan	Reports to a number of partnership and Warwickshire County Council meetings.
Community Forums	Proposals reviewed after 12 months of operation	Warwickshire County Council Corporate Localities Group as lead agency.
Community cohesion	Community Cohesion Engagement Strategy	Progress reported to Warwickshire Police, Warwickshire Race Equality Partnership and Warwickshire Customer First team
Counter Terrorism	Counter terrorism strategy to be developed by WSCP	Processes to be developed during 2008/09

**Summary of Priorities Emerging from Strategic Assessment  
December 2007**

A countywide risk assessment conducted in the autumn of 2007 highlighted three high priorities which align with all the Crime and Disorder Reduction Partnerships across the county and in part with the Warwickshire Police Strategic Assessment and national priorities:

- |   |
|---|
| <p><b>High Priorities</b></p> <ul style="list-style-type: none"> <li>▪ Wounding (violence serious &amp; other)</li> <li>▪ Criminal Damage</li> <li>▪ Anti Social Behaviour</li> </ul> |
|---|

There are four medium priorities and these align in part with the Crime and Disorder Reduction Partnerships across the county, the Warwickshire Police Strategic Assessment and national priorities:

- |  |
|--|
| <p><b>Medium Priorities</b></p> <ul style="list-style-type: none"> <li>▪ Domestic Burglary (non aggravated)</li> <li>▪ Theft from Vehicle</li> <li>▪ Common Assault</li> <li>▪ Theft of Vehicle</li> </ul> |
|--|

The remaining areas of concern are either single issue, cross cutting or shared between different agencies, as shown in the following table:

<p><b>Offender interventions</b> (including Prolific and Priority Offenders) Substance Misuse Alcohol – links to violent crime Drugs – links to acquisitive crime <b>Cross Border Crime</b></p>	<p><b>All Cross Cutting</b></p>
<p><b>Road Safety</b> Road Deaths</p>	<p><b>Police &amp; County</b></p>
<p><b>Business Crime</b></p>	<p><b>County and Warwick</b></p>
<p><b>Arson</b></p>	<p><b>County</b></p>
<p><b>Counter Terrorism</b></p>	<p><b>Police</b></p>

The table on the following page illustrates how these priorities emerged at local and county level and how they link into the National Community Safety Plan

**Table Linking Local, County and National Drivers**

Emerging Themes	Local (CDRP) Priorities	Countywide Risks	National Community Safety Plan
<b>Violence</b> Wounding (serious & other) Domestic Abuse	<b>ALL - high</b>	<b>Police – high</b>  <b>Countywide – high</b>	Reduce the most serious violence
<b>Common Assault</b> Alcohol related	<b>W, S, – high</b> N&B, R, -medium	<b>Police – high</b> Countywide - medium	
<b>Robbery</b>		<b>Police - high</b>	Reduce serious acquisitive crime
<b>1. Local Priorities</b> <b>2. Anti Social Behaviour</b>	<b>ALL - high</b>	Police - medium <b>Countywide – high</b>	Tackling local priorities, increasing public confidence
<b>Criminal Damage</b>	<b>ALL - high</b>	<b>Countywide – high</b>	-Ditto-
<b>Domestic Burglary (non aggravated)</b>	<b>N&amp;B, R, - high</b> NW, W, S - medium	Countywide – medium	-Ditto-
<b>Theft from Vehicle</b>	ALL - medium	Police SA Countywide – medium	-Ditto-
<b>Theft of Vehicle</b>	NW, N&B, R, S, - medium	Countywide – medium	-Ditto-
<b>Fear of crime &amp; Reassurance</b>	NW, N&B - raised	Police SA	-Ditto-
<b>Offender interventions</b> (including PPOs)	N&B, R, - raised	Warwickshire Probation Youth Offending Team	Reduce reoffending
Substance Misuse Alcohol & Drugs	N&B, R, - raised	Police WCC	Reducing the Harm Caused by Drugs and Alcohol
<b>Cross Border Crime</b>		Countywide	
<b>Road Safety</b> Road Deaths	<b>W – high</b> R - raised	Police WCC	
<b>Business Crime</b>	W	WCC	
<b>Arson (ASB)</b>		WCC	
<b>Counter Terrorism</b>		Police	Reduce the risk to the UK and its interests overseas from international terrorism

Key: NW - North Warwickshire, N&B - Nuneaton & Bedworth, R – Rugby, W – Warwick, S – Stratford, WCC – Warwickshire County Council, CDRP – Crime and Disorder Reduction Partnership

SA – Strategic Assessment

H:\MemberServices\Committee Papers-Loading\Community Protection O&S\Community Protection 08-09-03\CS Strategy 08.08.doc

## LOCAL AREA AGREEMENT TARGETS FOR COMMUNITY SAFETY

<b>Reduce serious crime</b>				
<i>We will work with partners in identifying and tackling hot spots to reduce serious crime, through the countywide violent crime strategy and the countywide domestic abuse strategy. We will also work with partners to target resources in order to prevent crime.</i>				
Success will be measured by:		Targets for 2008-11		
		2008/09	2009/10	2010/11
A reduction in incidents of serious violent crime <b>Local Area Agreement 2008 measure (National Indicator 15)</b>	Recorded offences	248	235	222
	Per 1000 population	0.47	0.45	0.43
A reduction in incidents of serious acquisitive crime <b>Local Area Agreement 2008 measure (National Indicator 16)</b>	Recorded offences	7,595	7,195	6,795
	Per 1000 population	14.54	13.78	13.01

<b>Reduce anti-social behaviour, including criminal damage, drug &amp; alcohol misuse and arson</b>				
<i>We will work with partners in identifying and tackling hot spots of anti-social behaviour, criminal damage and arson. We will also take a locality-based approach, working with partners to target resources in order to prevent anti-social behaviour, arson and criminal damage. We will implement the Drug and Alcohol strategies across the County with partners.</i>				
Success will be measured by:		Targets for 2008-11		
		2008/09	2009/10	2010/11
Increased public satisfaction in the handling by agencies of crime and of anti-social behaviour <b>Local Area Agreement 2008 measure (National Indicator 21)</b>		Baseline to be agreed following the Place Survey		
The number of drug users in effective treatment <b>Local Area Agreement 2008 measure (National Indicator 40)</b>		957	985	1,025
The number of deliberate primary vehicle fires <b>Local Public Service Agreement 2 Target for 2008/09</b>		458 incidents	N/a – End date for these Local Public Service Agreement 2 measures is 31 <sup>st</sup> March 2009	
The number of deliberate small fires <b>Local Public Service Agreement 2 Target for 2008/09</b>		1132 incidents		
The number of deliberate primary property fires <b>Local Public Service Agreement 2 Target for 2008/09</b>		170 incidents		
The number of victims participating in a restorative process <b>Local Public Service Agreement 2 Target for 2008/09</b>		75%		
Victims' satisfaction rate with the restorative process <b>Local Public Service Agreement 2 Target for 2008/09</b>		85%		

<b>Reduce the risks of offending for young people and prolific offenders</b>			
<p><i>We will focus resources on prolific and priority offenders to reduce offending across the county.</i></p> <p><i>We will target and support young offenders and their families in order to reduce offending and re-offending.</i></p>			
<b>Success will be measured by:</b>	<b>Targets for 2008-11</b>		
	<b>2008/09</b>	<b>2009/10</b>	<b>2010/11</b>
Re-offending rate of prolific and priority offenders Local Area Agreement 2008 measure (National Indicator 30)	Targets will not be available until mid-May 2008 due unavailability of Home Office figures		
The % of young people who re-offend within 12 months (based on the cohort identified between Oct 1st to Dec 31 <sup>st</sup> 2008) Local Public Service Agreement 2 Target for 2008/09	33.3%	N/a – End date for these Local Public Service Agreement 2 measures is 31 <sup>st</sup> March 2009	
The number of parents receiving targeted support from the Youth Offending Service Local Public Service Agreement 2 Target for 2008/09	100		
Parents' satisfaction rate with the Youth Offending Service Local Public Service Agreement 2 Target for 2008/09	80%		

<b>Improve Road Safety</b>			
<p><i>We aim to reduce road casualties by every available means including education and training, publicity, engineering measures and enforcement. We believe the most effective approach is an integrated one using the different methods together. (Local Transport Plan RS3)</i></p> <p><i>We support the Government's endorsement of partnership working. Our policy is to work in partnership with anyone who will help reduce casualties (Local Transport Plan RS4)</i></p> <p><i>We will have a special focus on the safety of children in line with the government target for reducing child casualties (Local Transport Plan RS9)</i></p>			
<b>Success will be measured by:</b>	<b>Targets for 2008-11</b>		
	<b>2008/09</b>	<b>2009/10</b>	<b>2010/11</b>
The number of people killed or seriously injured (KSI) in road traffic accidents Local Public Service Agreement 2 Target for 2008/09 and Local Area Agreement 2008 measure (National Indicator 47)	393	389	385